



CADprofi 2018

Summary of main changes made to the program since the CADprofi 2017.01 version.



CADprofi

Table of contents:

- [General commands \(affects all modules\)](#)
- [CADprofi Architectural](#)
- [CADprofi Electrical](#)
- [CADprofi Mechanical](#)
- [CADprofi HVAC & Piping](#)
- [Manufacturers libraries](#)
- [Adjustment to CAD programs](#)



CADprofi

✓ CADprofi – Open BIM

Classification of objects and management of layers based on Open BIM (IFC classification) has been added to the program.



[Video – Open BIM](#)

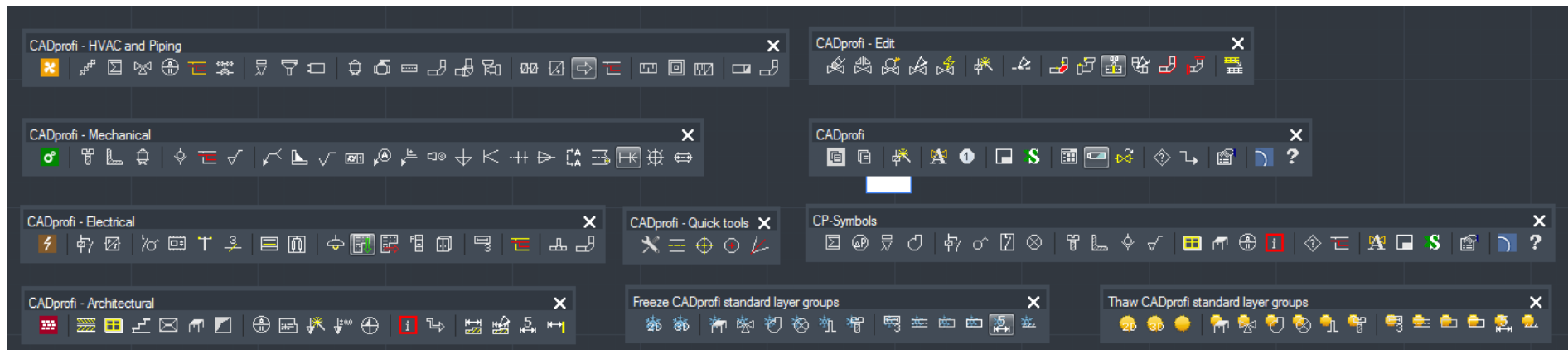
Data printing from current drawing			
You can sort data and specify width of columns			
Name	BIM class	Sum	--
Bed	IfcFurnishingElement	1	pcs.
Binding circular ceiling lights	IfcLamp	15	pcs.
Binding circular wall lighting	IfcLamp	10	pcs.
Binding light triple	IfcLamp	6	pcs.
Binding lighting, raster	IfcLamp	10	pcs.
Binding single light	IfcLamp	2	pcs.
Cabinet	IfcFurnishingElement	3	pcs.
Cabinet	IfcFurnishingElement	1	pcs.
Cabinet	IfcFurnishingElement	1	pcs.
Car	IfcCivilElement	1	pcs.
Chair	IfcFurnishingElement	4	pcs.
Chest of drawers	IfcFurnishingElement	3	pcs.
Chest of drawers	IfcFurnishingElement	2	pcs.
Combustion duct	IfcDistributionElement	3	pcs.
Connection	IfcSpaceHeater	5	pcs.
Control valve	IfcDistributionControlElement	2	pcs.




CADprofi

✓ Icons for dark interface

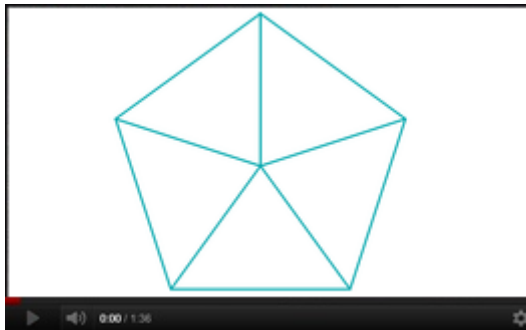
CADprofi toolbars and ribbons have been customized for dark interface that is used on some newer CAD programs (AutoCAD, ZWCAD and others).



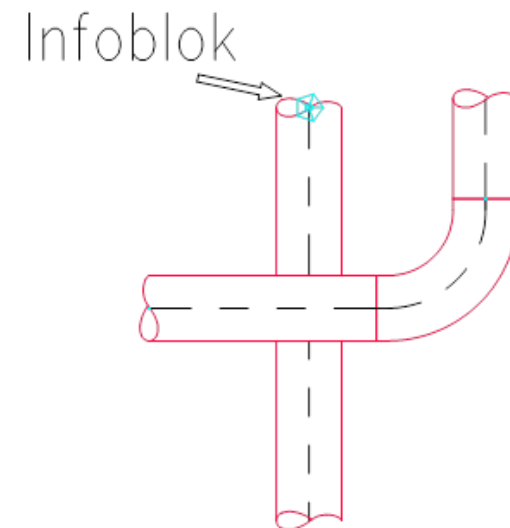
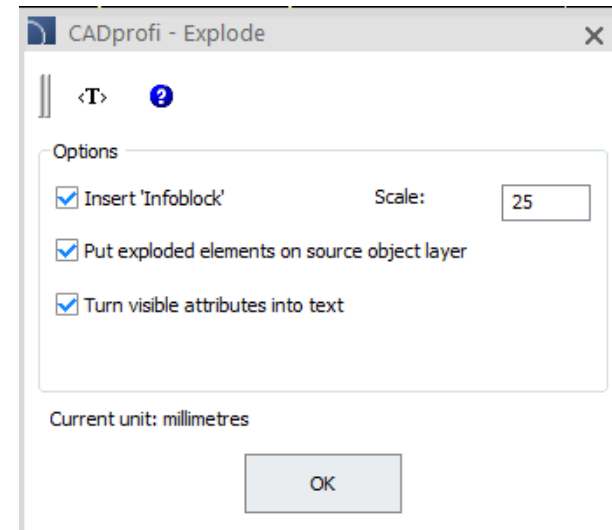
✓ CADprofi - Explode

New command *CADprofi - Explode*  has been added to the program. This command explodes the indicated CADprofi blocks, allowing to freely edit the drawing without the loss of information from the exploded elements.

In case of indicating the *Insert 'Infoblock'* option the program creates a special block, to which all data from the exploded element will be taken over. This block will be placed on layer that is not visible on printouts, but it's attributes will be included in specifications.

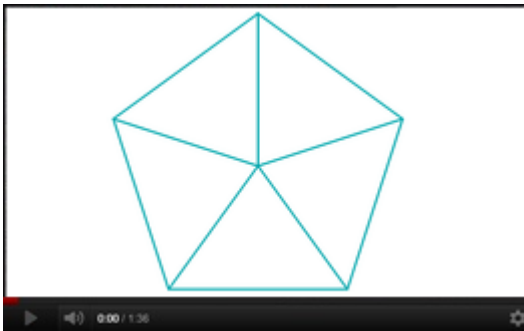


[Video – 'CADprofi Explode' + Infoblocks](#)

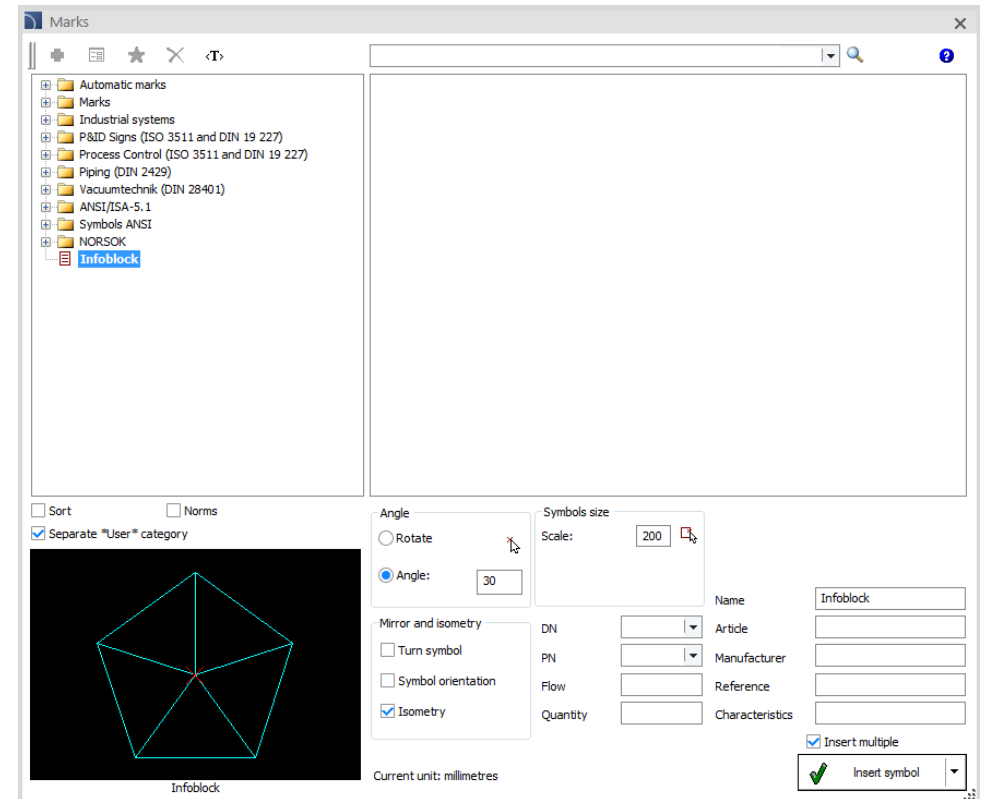


✓ Infoblocks in CADprofi program libraries

Infoblocks have been added to CADprofi libraries. They contain a set of attributes that user can freely fill. Thanks to Infoblocks user can insert a special block into the drawing whose attributes will be included in specifications, but the block itself will not be visible on printouts.



[Video – 'CADprofi Explode' + Infoblocks](#)

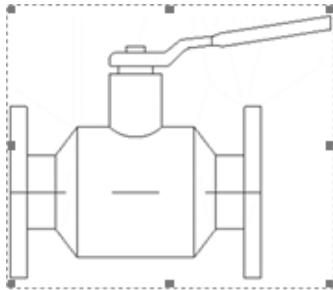



✓ Using commands from the context menu

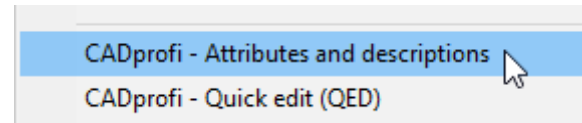
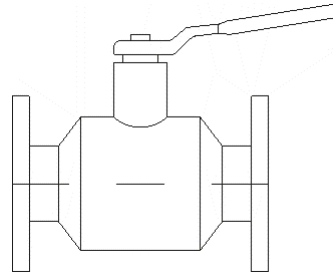
In selected CAD programs, some commands are available in the context menu (right mouse button):

- Attributes and descriptions,
- Quick edit.

1. Indicate an object on the drawing



2. Click the right mouse button 





CADprofi

✓ Repeat the command. Insert multiple

For some dialog windows an additional options that enhance functionality have been added:

- **Repeat the command** - allowing for automatic repetition of the last command without the need to manually run the command dialog window from menu or toolbar.

☒ Repeat the command

- **Insert multiple** - allowing for multiple insertion of the selected object to the drawing with bypassing the dialog window. In this case, the command can be cancelled by pressing the *Esc* key.

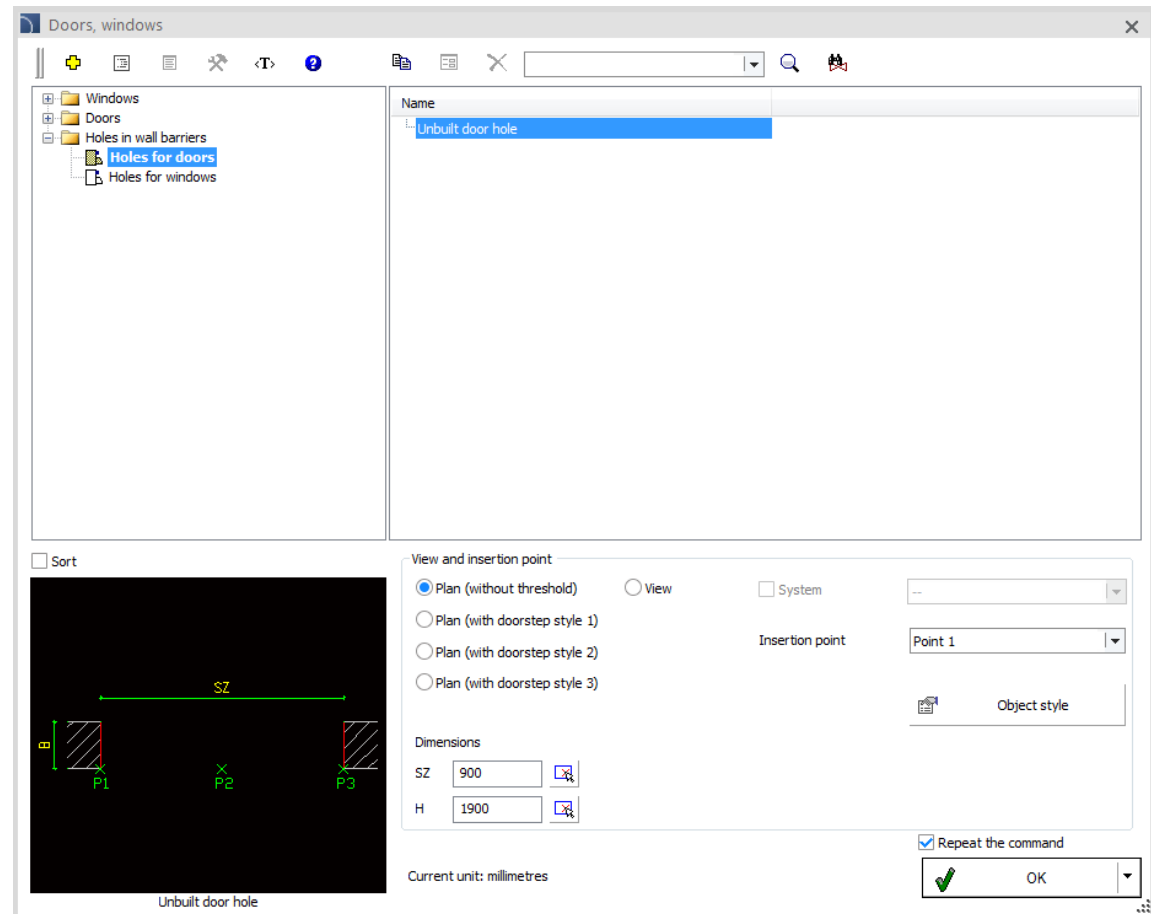
☒ Insert multiple



CADprofi

✓ CADprofi Architectural – holes in wall barriers

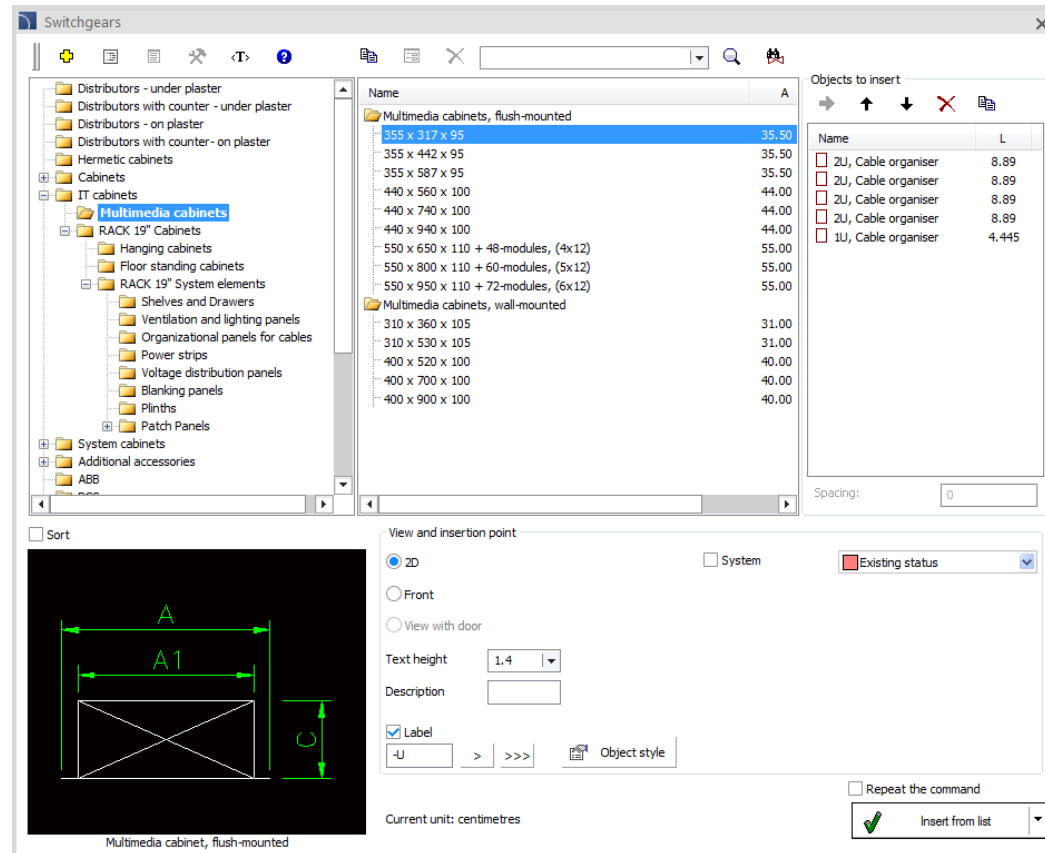
Holes in wall barriers (unbuilt door hole and unbuilt window hole) have been added to the program.



✓ CADprofi Electrical – changes in the Switchgear command

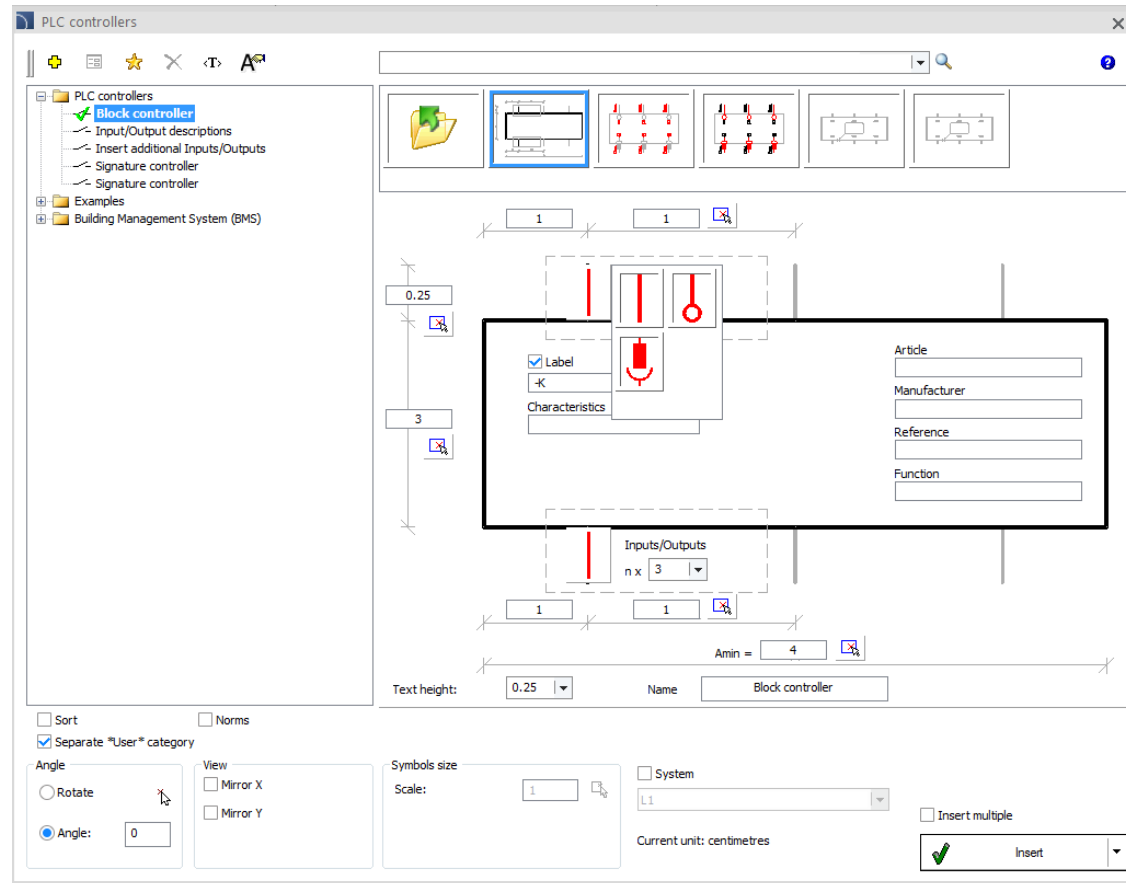
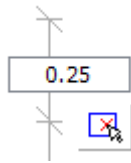
Functionality of the command has been extended by:

- Possibility to insert items from the list, thanks to which it is possible to insert to the drawing many elements.
- Extension of the switchgear database (distributors under plaster/on plaster and distributors with counters).
- Addition of IT cabinets (multimedia cabinets, RACK19" cabinets with system elements)
- Addition of system cabinets (wall mounted, flush mounted, floor standing with system elements).
- Addition of mounting rails DIN TH35, busbars and plastic wiring ducts.
- Switchgear blocks have got defined intelligent connection points that allow automatic positioning of products inserted into switchboard, such as building system elements and various electrical apparatus.



✓ CADprofi Electrical – changes in the *PLC controllers* command

The PLC controller command has been extended with the possibility to specify the input/output size. The way to describe and insert additional inputs/outputs has been rebuilt and adapted to the new functionality.





CADprofi

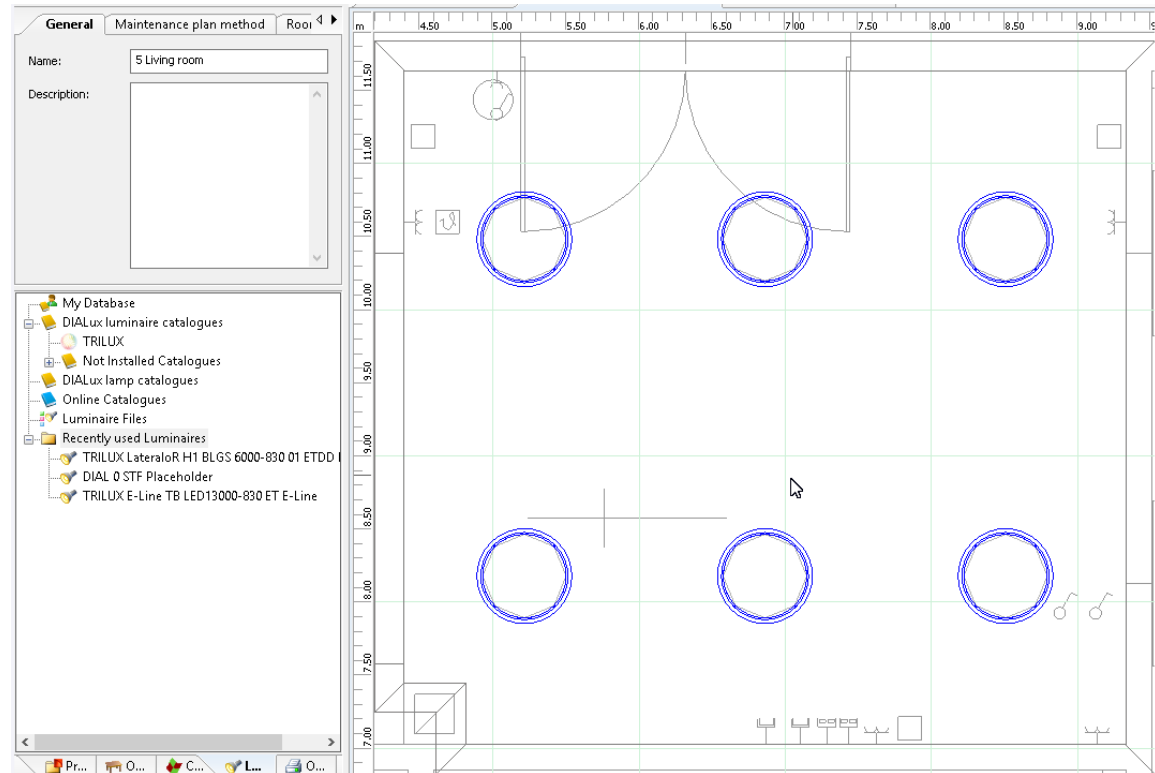
✓ CADprofi Electrical – cooperation with DIALux program

A possibility to export rooms to DIALux have been added to the program. Thanks to this we will receive a building outline and the project structure with room names imported from CADprofi.

Program also allows to import luminaires from DIALux. During import all luminaires will be replaced with standard CADprofi blocks and information about them (name, type) will be taken from DIALux and replaced with appropriate attributes.

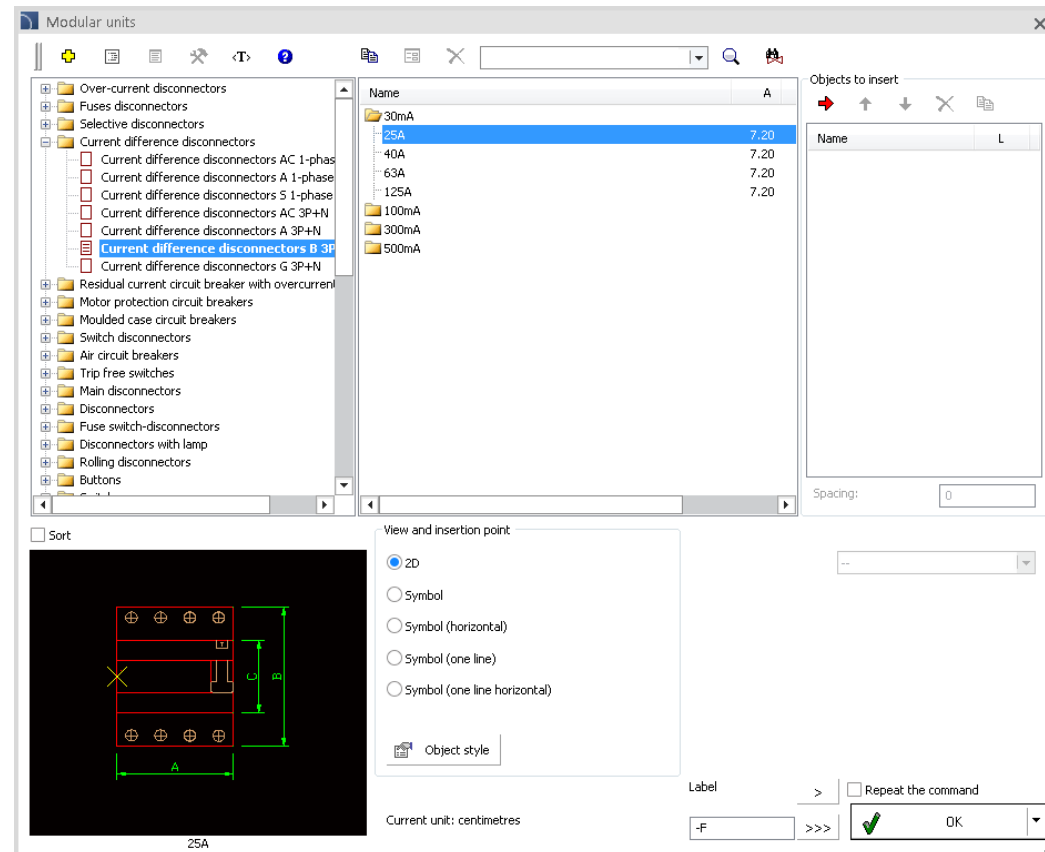


[Watch how CADprofi works with DIALux](#)



✓ CADprofi Electrical – extension of the current difference disconnectors database

New current difference disconnectors (type AC, A, B) have been added to the program.

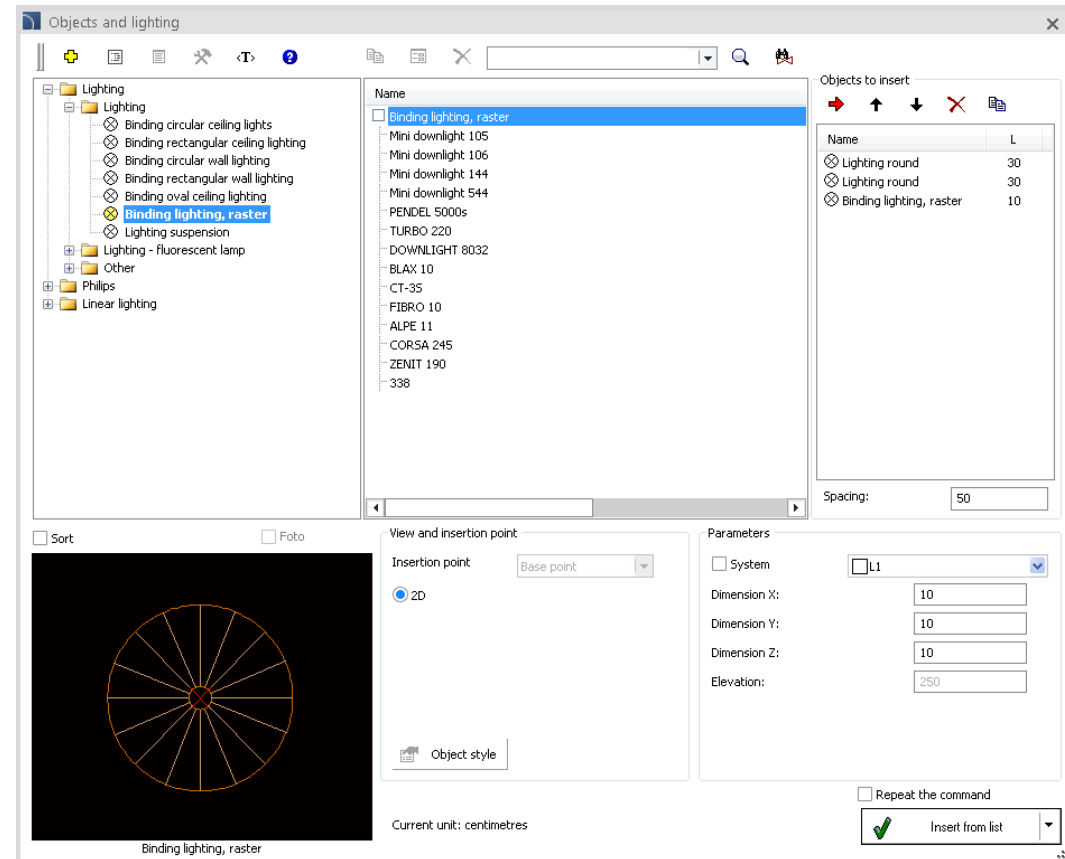


✓ CADprofi Electrical – changes in the *Objects and lighting* command



Functionality of the command has been extended by:

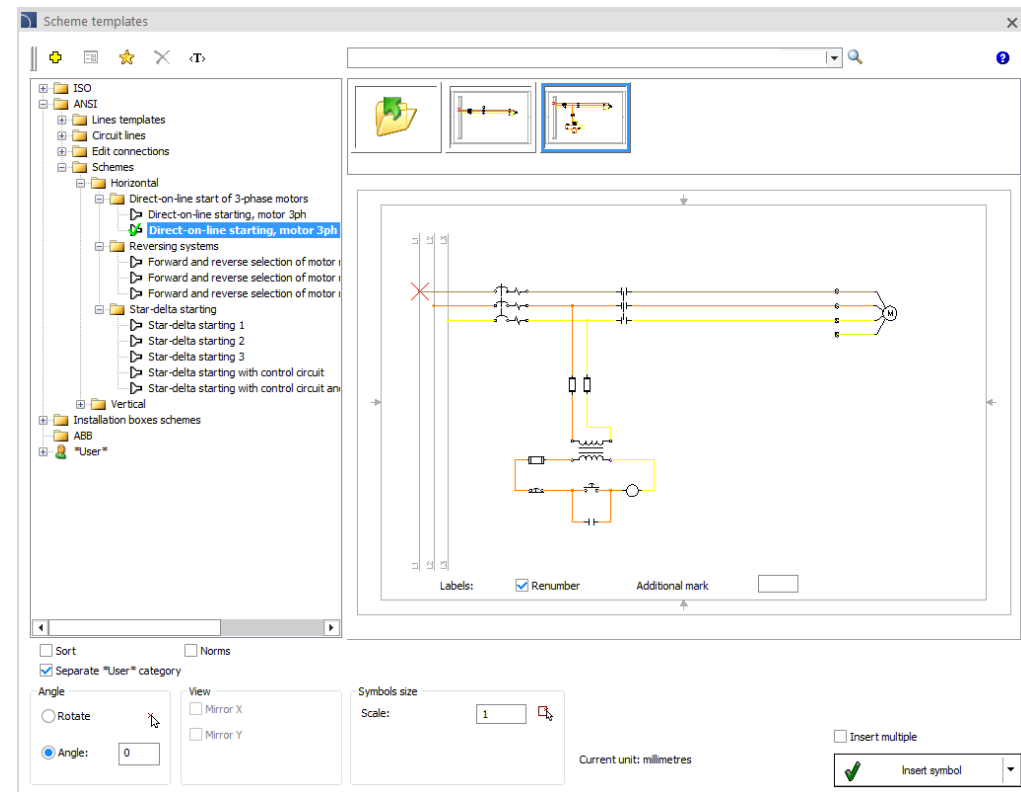
- Possibility to insert items from the list, thanks to which it is possible to insert to the drawing many elements with specified spacing.
- Possibility to repeat the command.



✓ CADprofi Electrical – scheme library extension

Additional symbols, potential & circuit lines and sample schemes have been added to the program, including:

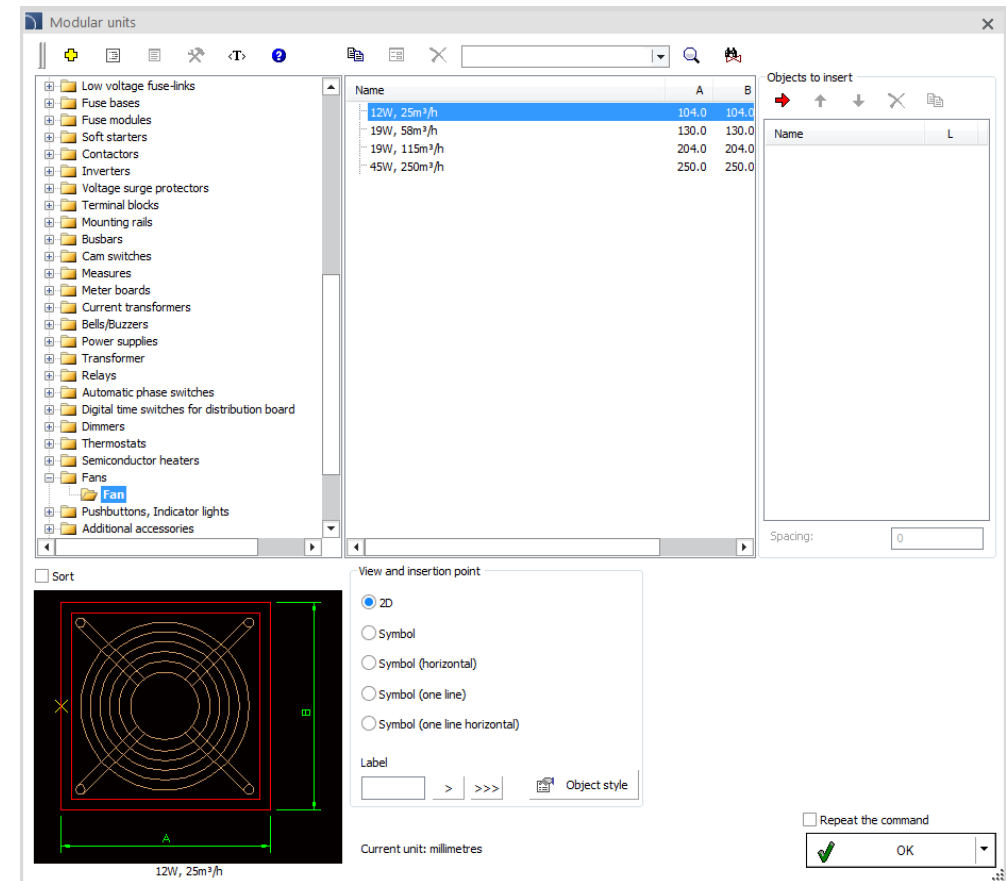
- electrical symbols (IEC, NFPA);
- vertical and horizontal complex symbols (NFPA);
- potential and circuit lines (IEC, ANSI);
- vertical and horizontal schemes templates (ANSI).



✓ CADprofi Electrical – extension of the modular apparatus library

Additional symbols and modular apparatus elements have been added to the program, including:

- Residual current circuit breaker with overcurrent protection 3-phase;
- Disconnectors with lamp 2-pole;
- Switch for panel mounting;
- Changerover switch for panel mounting;
- Switches;
- Modular analogue and digital ammeter;
- Modular analogue and digital voltmeter;
- Installation relay;
- Interface relay;
- Time relay, flush mount version;
- Time relay for starting;
- Priority relay;
- Astronomical & digital time switch with weekly & yearly program;
- Shunt trip and undervoltage release;
- Front and side mountable auxiliary contact,
- Rotary handle,
- Direct and door handle,
- Residual-current boxes, characteristics A, AC, B,
- Selective residual-current boxes A, AC, B;
- Two states control lamp;
- Fuse modules;
- Semiconductor heaters and electrical fans;
- Auxiliary contact for motor contactor.



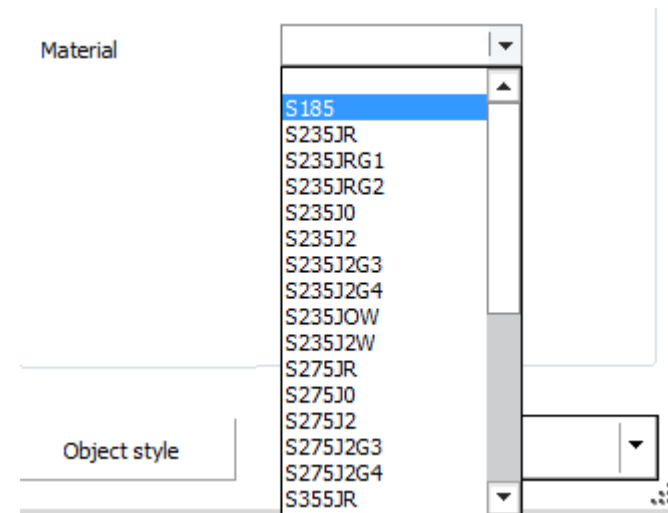
Additional signal cables and lighting have been added to the program.



CADprofi

✓ CADprofi Mechanical – ability to specify the type of steel in profiles

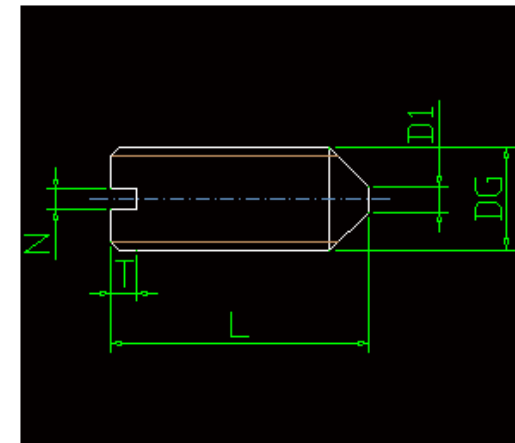
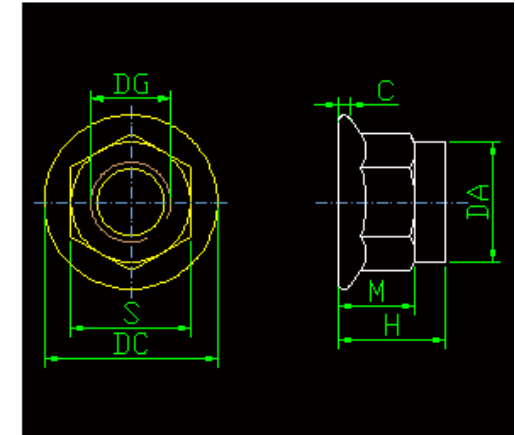
An ability to specify the type of steel (material) in steel profiles have been added to the program.



✓ CADprofi Mechanical – additional DIN, EN, ISO, PN standards

New standardized elements have been added to the program, including:

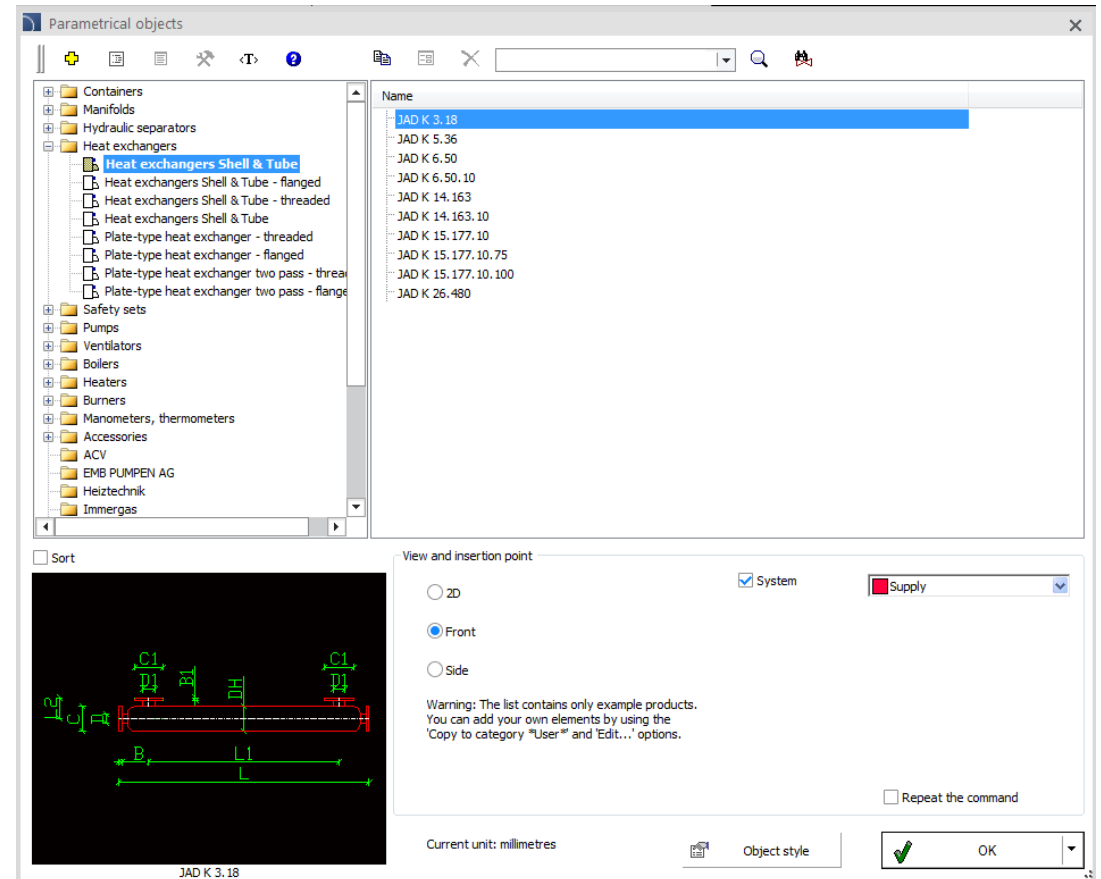
- DIN EN ISO 2342 - Slotted headless screw with shank,
- DIN EN ISO 8735 - Parallel pin with internal thread,
- DIN EN ISO 8746 - Grooved pin with round head,
- DIN EN ISO 8765 – Hexagon head bolt with metric fine pitch thread product A and B,
- DIN EN 14399-6 - Plain washer, chamfered, hardened and tempered for high-strength structural bolting,
- DIN EN 14399-8 - System HV - Hexagon fit bolt
- DIN EN 27435 - Slotted set screw with long dog point,
- DIN 920 – Slotted pan head screws with small head,
- DIN 921 - Slotted pan head screws with large head,
- DIN 923 – Slotted pan head screws with shoulder,
- DIN 927 – Slotted shoulder screws,
- DIN 986 – Prevailing torque type hexagon domed cap nuts,
- DIN 6888 – Woodruff key,
- DIN 6912 – Hexagon socket head cap screws with centre, with low head,
- DIN 7349 – Plain washers for bolts with heavy clamping sleeves,
- DIN 7603 – Sealing ring,
- DIN 7968 - Hexagon fit bolt,
- DIN 7984 – Hexagon socket head cap screws with low head,
- ISO 2342 - Slotted headless screw with shank,
- ISO 4766 - Slotted set screws with flat point,
- ISO 7041 - Prevailing torque type hexagon nut,
- ISO 7043 - Prevailing torque type hexagon nut with flange,
- ISO 7044 - Prevailing torque type hexagon nut with flange,
- ISO 7719 - Prevailing torque type hexagon nut,
- EN 14399-8 - System HV - Hexagon fit bolt.
- PN-73/H-93460.01 (L-shape equal angles).



✓ CADprofi HVAC & Piping – addition of heat exchangers to the library

Do biblioteki programu dodano wymienniki ciepła, w tym:

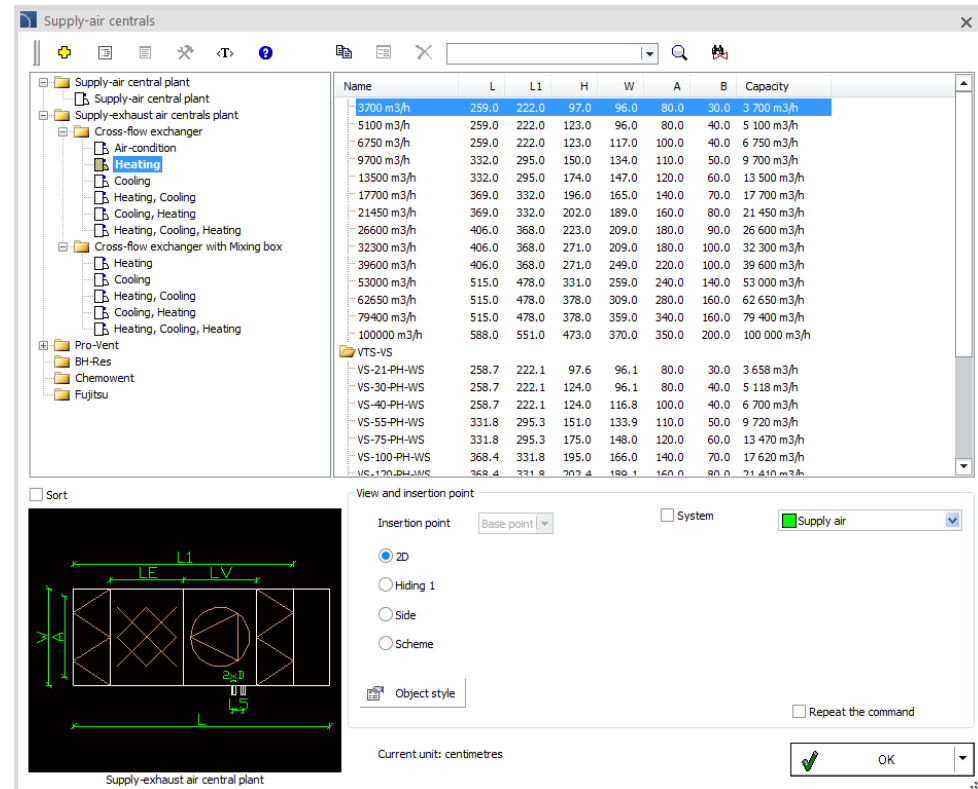
- heat exchangers Shell & Tube;
- plate type heat exchangers;
- plate type heat exchangers two pass.



✓ **CADprofi HVAC & Piping - addition of supply-exhaust air central plants to the library**

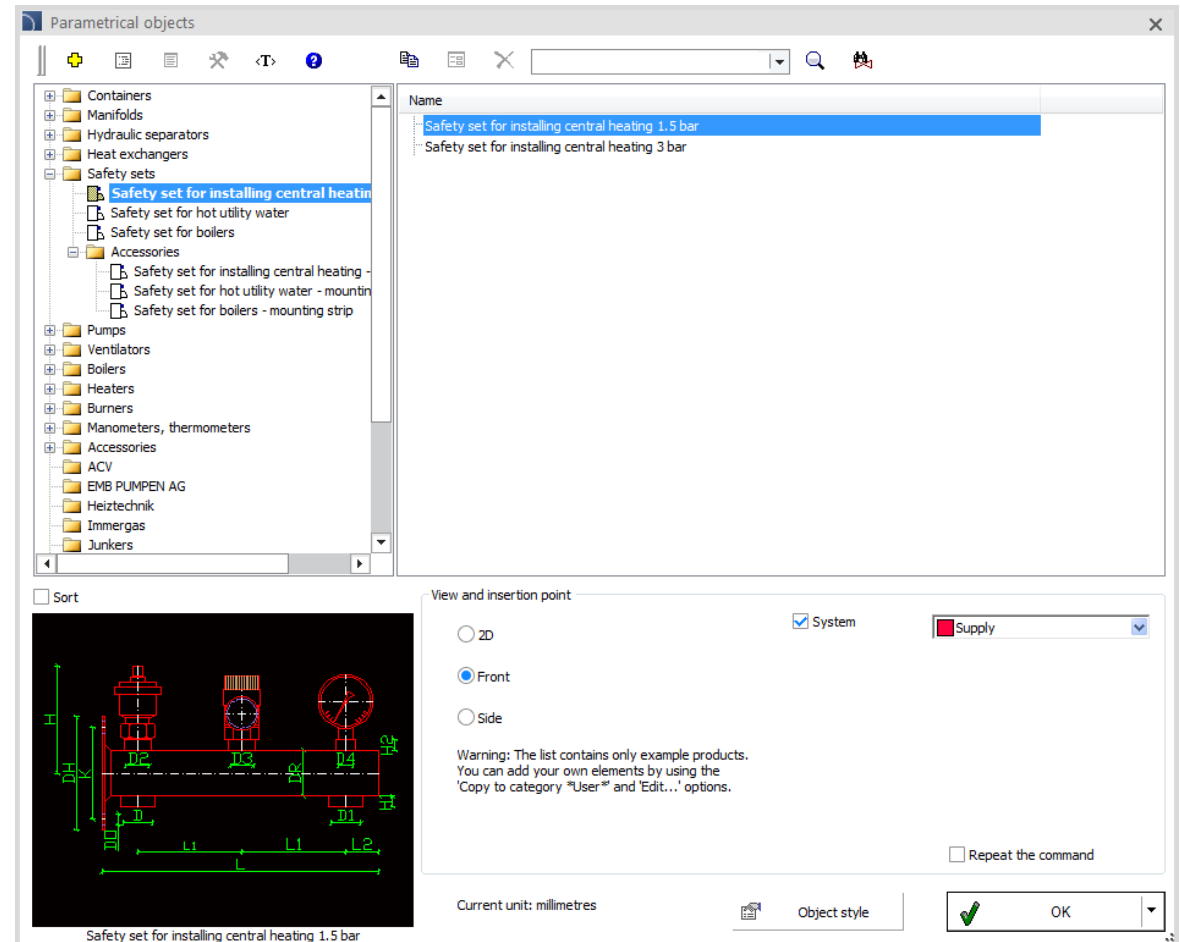
Supply-exhaust air central plants have been added to the library, including:

- cross flow exchanger;
- cross-flow exchanger with mixing box.



✓ CADprofi HVAC & Piping – addition of safety sets to the library

Safety sets used in central heating, hot utility water and for boilers that protect against dangerous pressure rise have been added to the program.







✓ CADprofi HVAC & Piping – additional drawing style for 2D pipelines

Additional drawing style for pipelines in general view (used for example in bent pipes) have been added to the program.

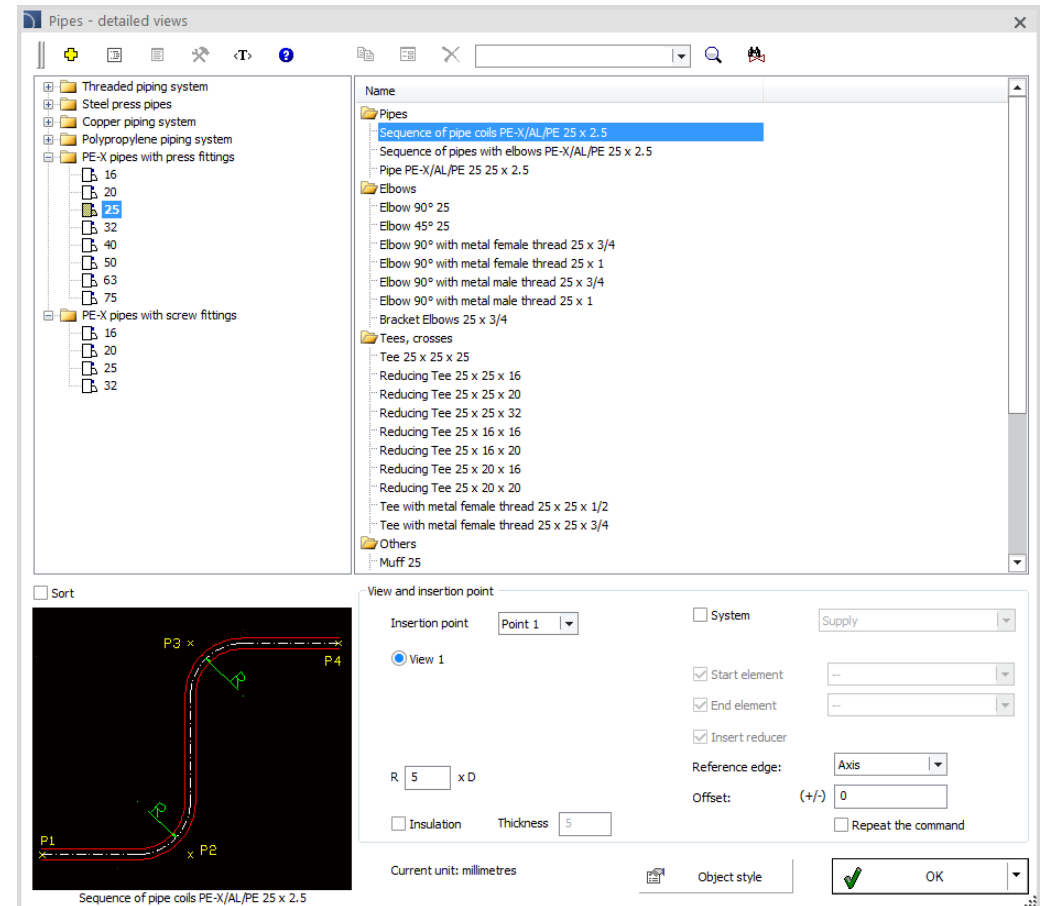
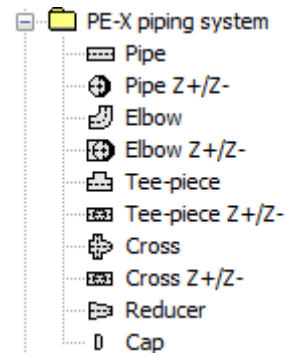


[-] Installation and drawing	
Installation	 Supply
Type	Pipe ▾
[-] Manufacturer and type	
	Pipe
	Pipe - style 2

[-] Installation and drawing	
Installation	 Supply
Type	Elbow - style 2 ▾
[-] Manufacturer and type	
	Elbow
	Elbow - style 2
Manufacturer	Two-segment elbow
Type	Segmented elbow

✓ CADprofi HVAC & Piping – PE-X Piping system and fittings

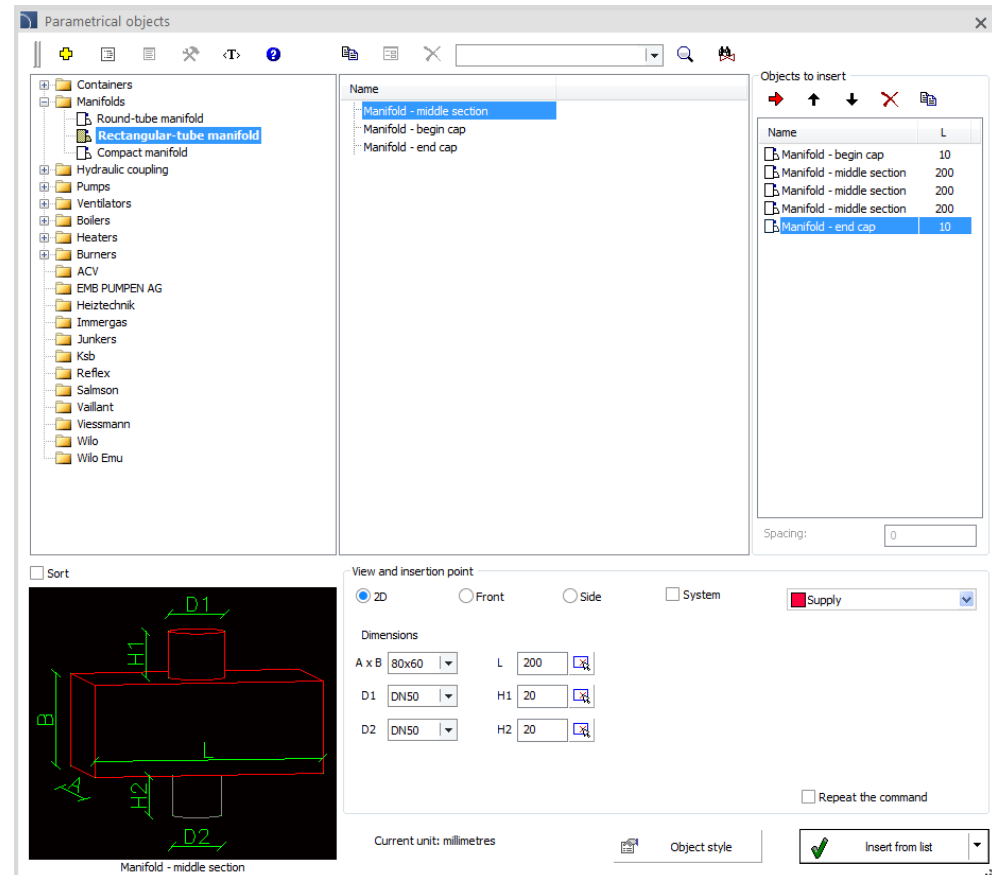
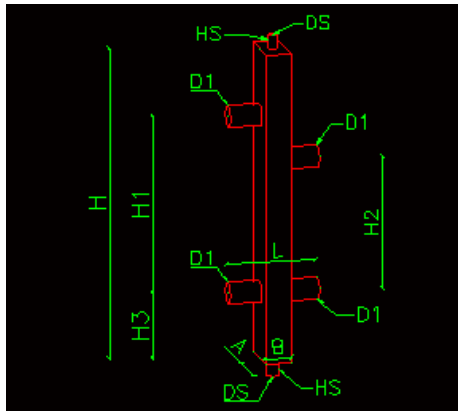
PE-X Piping system (with screw and press fittings) have been added to the *Pipes- general views* and *Pipes – detailed views* commands. This system is used in hot and cold water installations, as well as, in central heating.



✓ CADprofi HVAC & Piping – upgraded insertion of manifolds

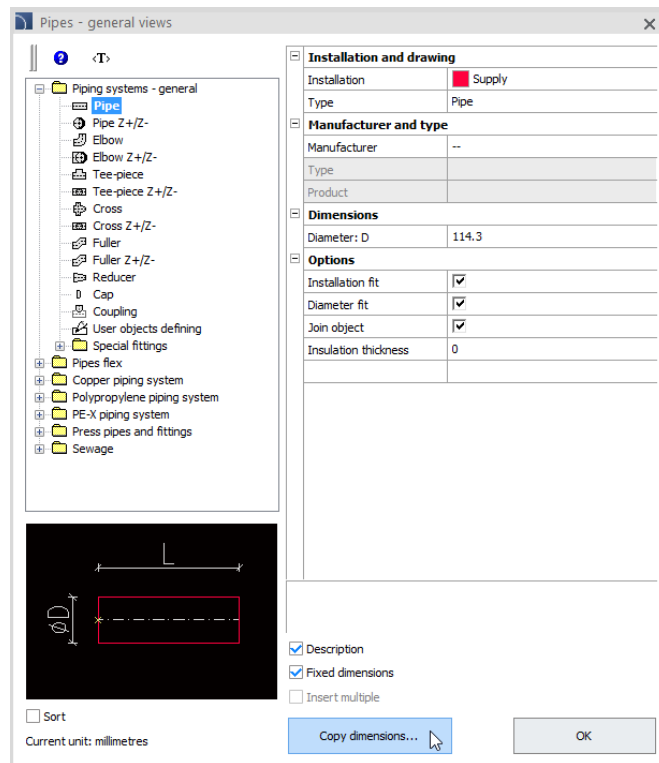
In the current program version the definition of manifolds is fully parametric, which makes it easier to define a manifold and its caps. In addition, individual sections can be added to the objects to insert list, allowing user to immediately insert the entire manifold into the drawing.

Additionally a round type and compact hydraulic couplings have been added to the program.



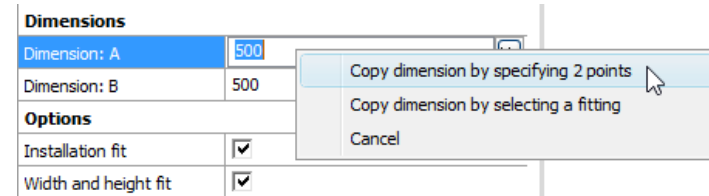
✓ CADprofi HVAC & Piping – copying dimensions

In pipes and duct in general views an additional *Copy dimensions* option has been added.

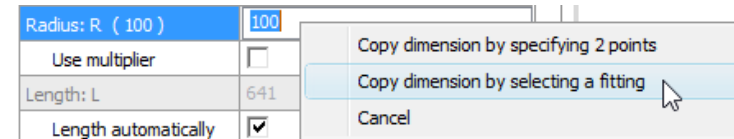


In general views a possibility to retrieve dimensions by right clicking the mouse button and afterwards have been added to the program. Thanks to this user can:

- Copy dimension by indicating two points:



- Copy dimension by selecting a fitting:



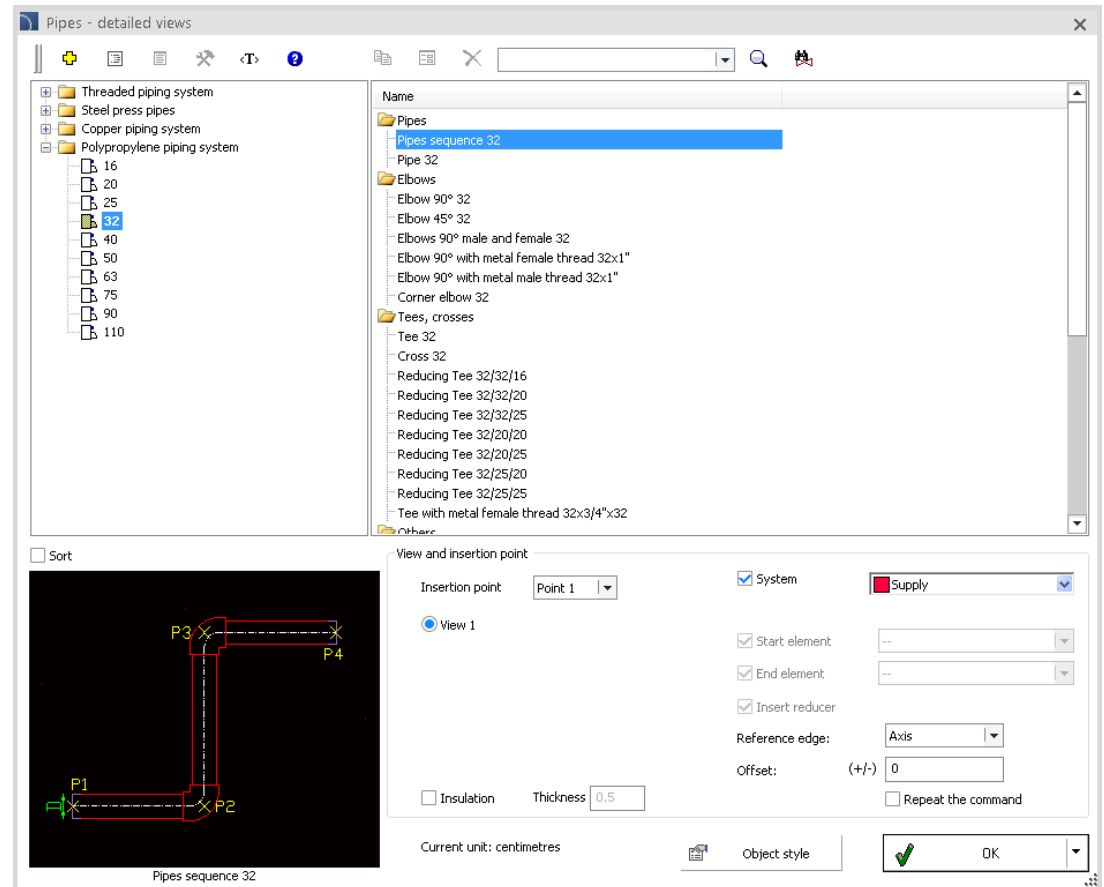


CADprofi

✓ CADprofi HVAC & Piping – drawing insulation in detailed view

The possibility to draw fittings and pipes with insulation in detailed views have been added to the program.

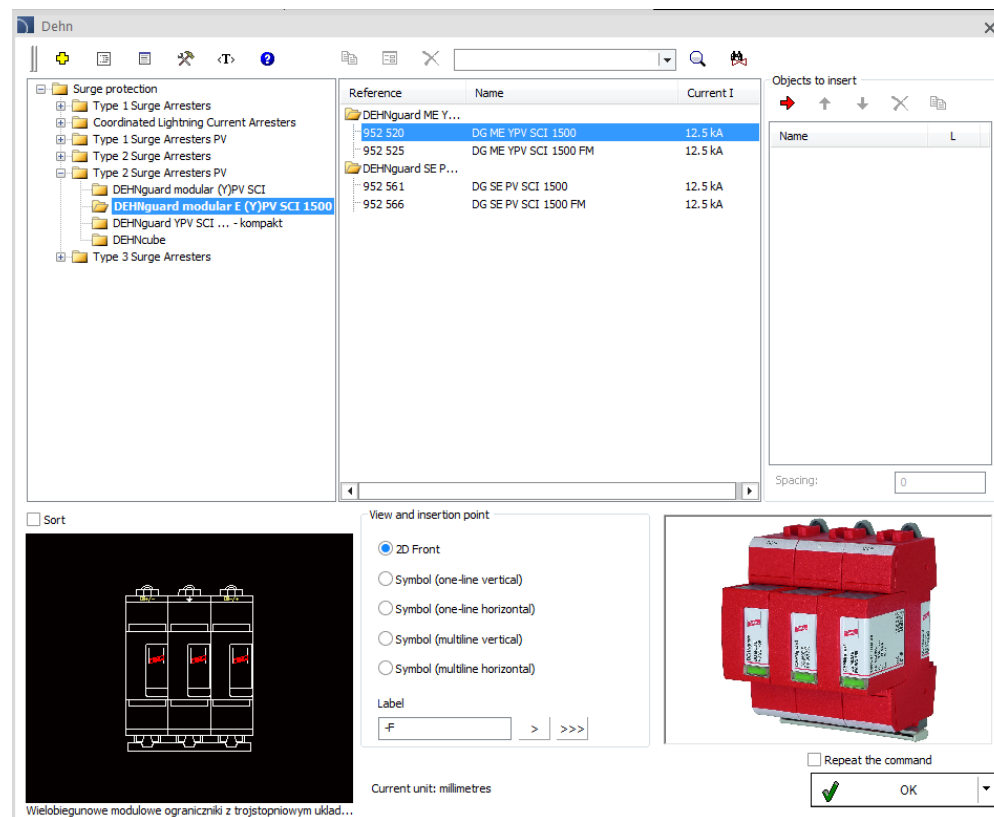
☒ Insulation Thickness



✓ New Dehn library

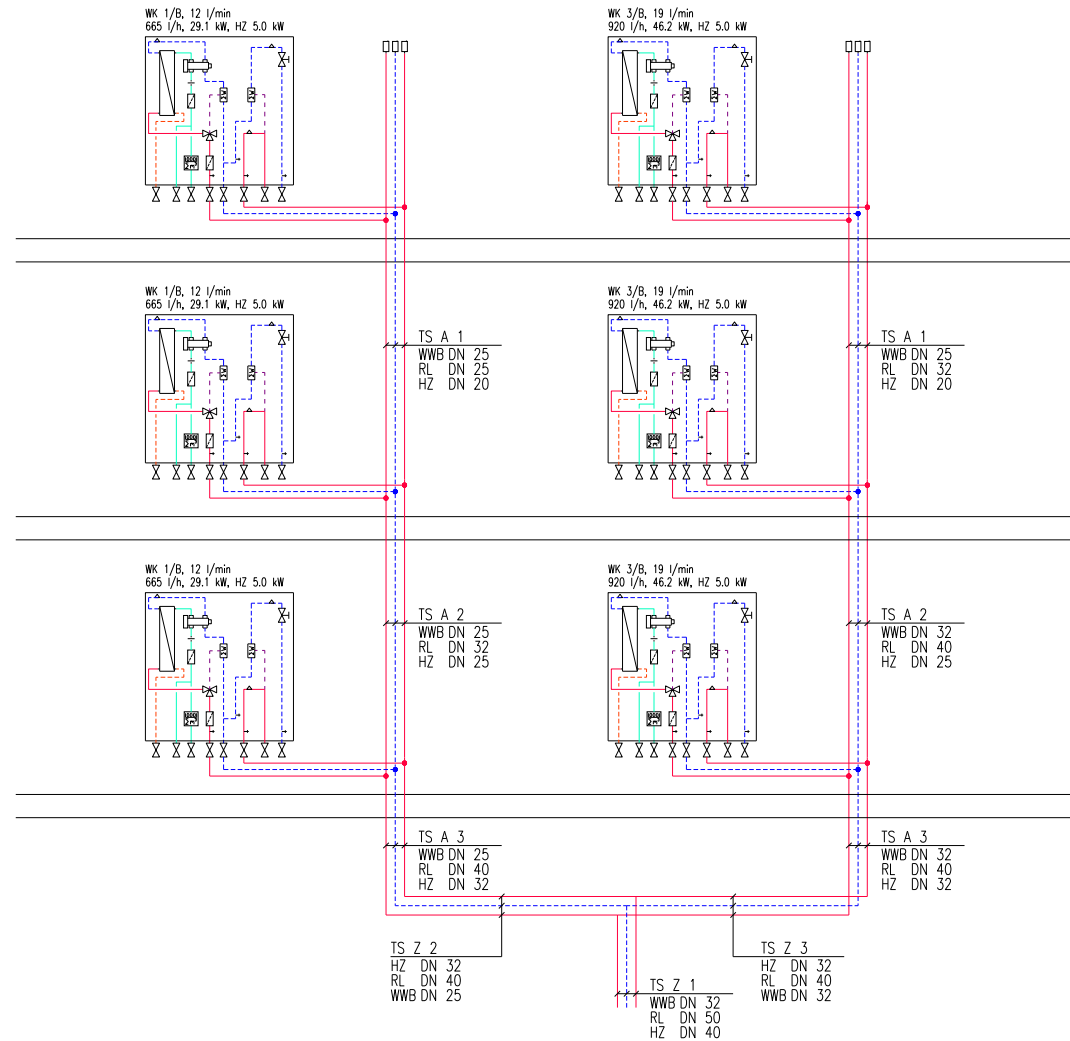
New library that is available in CADprofi program contains surge protection products, including:

- type 1 surge current arresters;
- type 1 surge arresters PV;
- type 2 surge arresters;
- type 2 surge arresters PV;
- type 3 surge arresters;
- coordinated lightning current arresters.



✓ Changes in the KaMo library

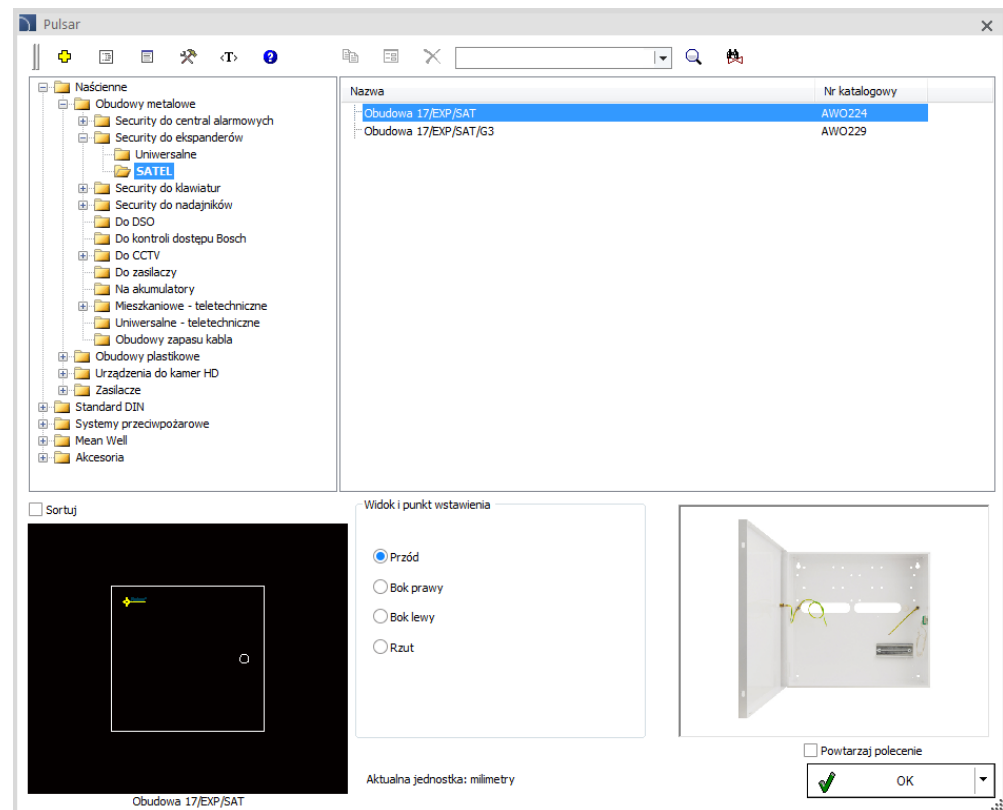
3-wire housing stations have been added to the program. These stations are also included in comprehensive hydraulic calculations and in the schemes generator.



✓ New Pulsar library

New Pulsar library that contains covers and power supplies has been added to the program.

Library is available only in Polish language.



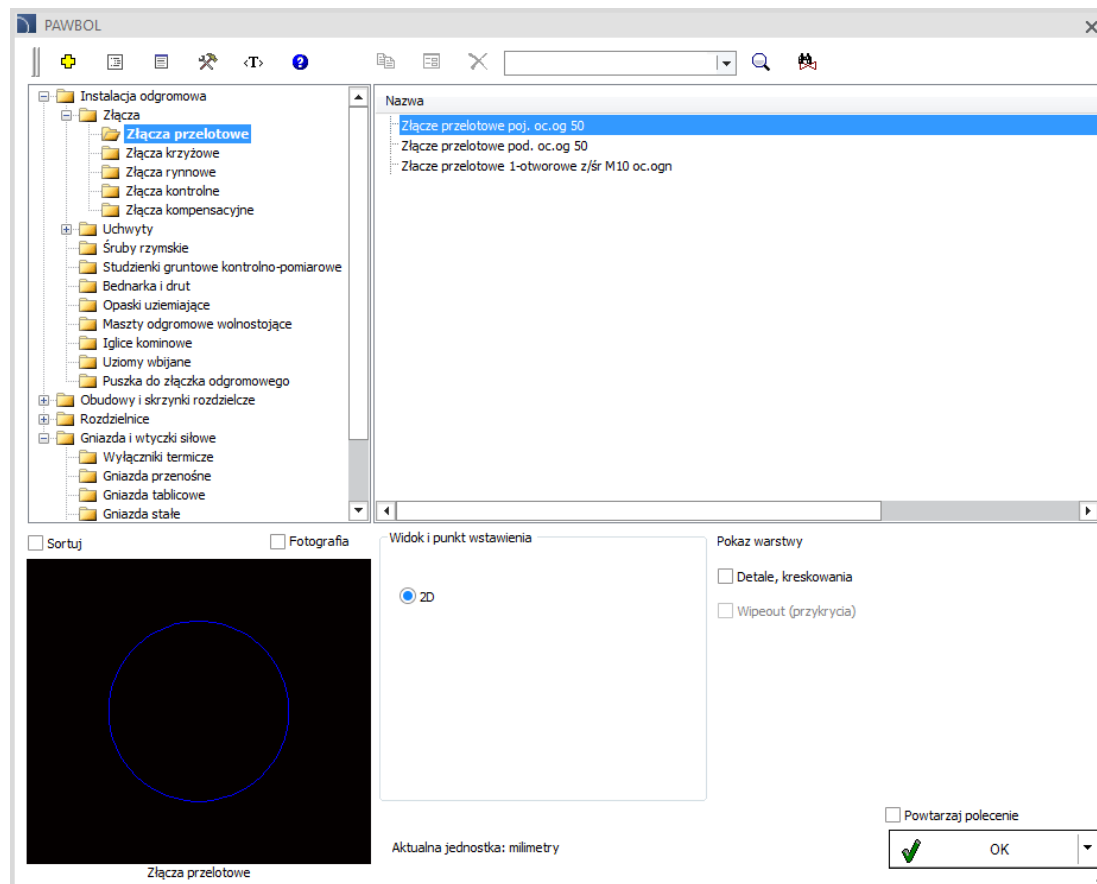


CADprofi

✓ New Pawbol library

New Pawbol library that contains distributors and lighting protection systems has been added to the program.

Library is available only in Polish language.





CADprofi

✓ New Trilux library

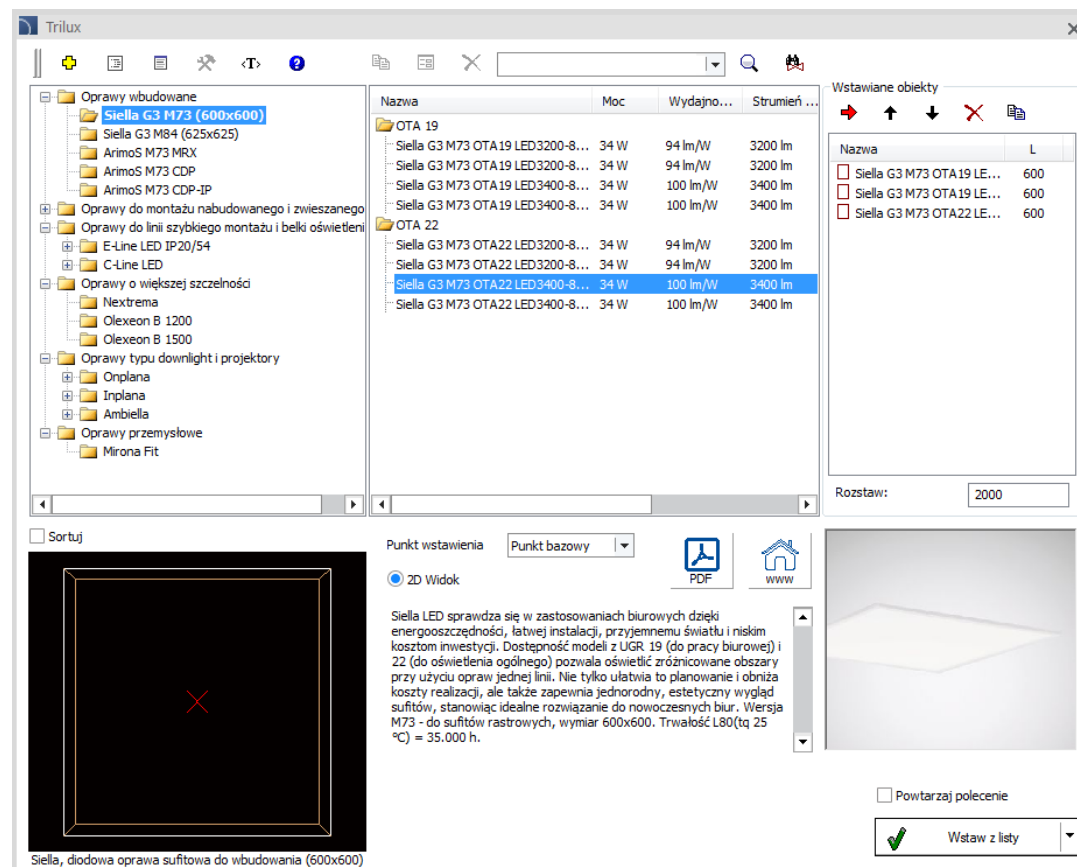
New Trilux library that contains lighting has been added to the program.

Library is available only in Polish language.

In case of importing DIALux stf files that contain Trilux products, then the appropriate lighting from Trilux is being added to the CAD program.



TRILUX
SIMPLIFY YOUR LIGHT.



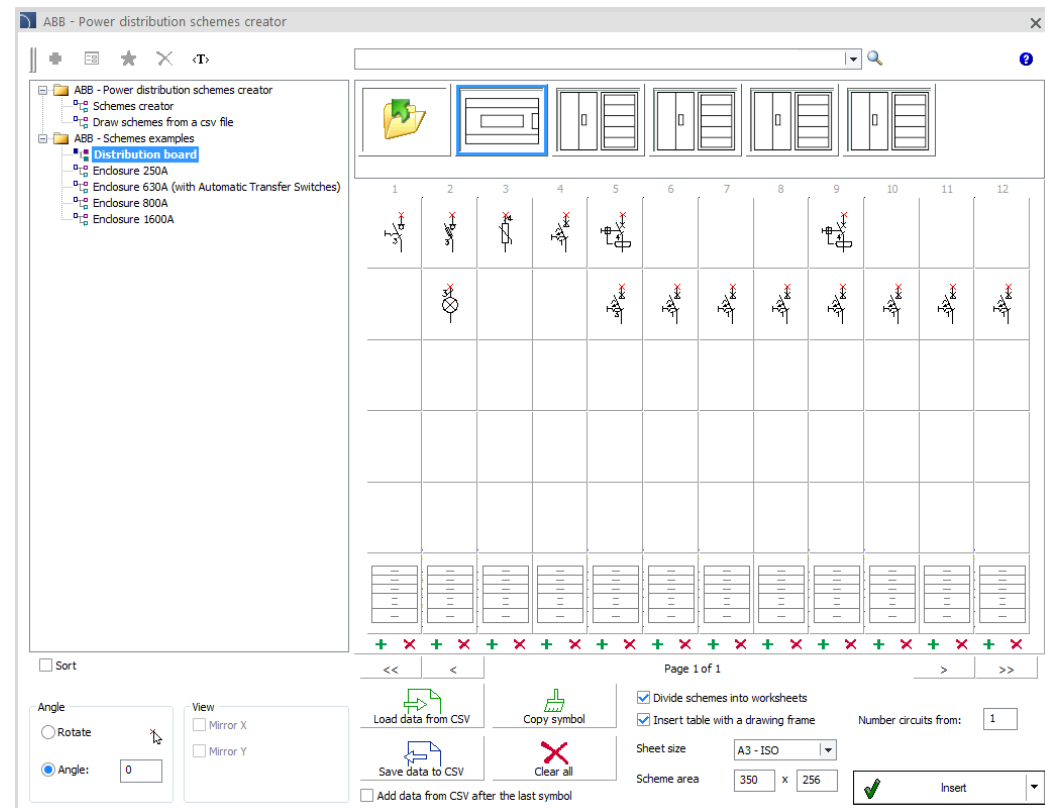
✓ New ABB library

An intuitive and easy to use ABB library automates the design of electrical installations using ABB products. Library is currently translated in Polish and in English. More languages will come soon.

ABB library includes the following categories:

- Low voltage apparatus and cabinets contains a complete library of ABB products, including: modular and measuring apparatus, photovoltaics, circuit breakers and disconnectors, ABB i-bus KNX and ABB free@home® system devices, cabinets and others.
- Power distribution schemes creator that allows to easily create an electrical installation project with ABB products.
- Low voltage systems that includes products from the call ABB SIGNAL and video intercom ABB WELCOME systems.
- Low voltage systems that includes exemplary schemes: ABB i-bus KNX, ABB free@home®, ABB SIGNAL and ABB WELCOME.

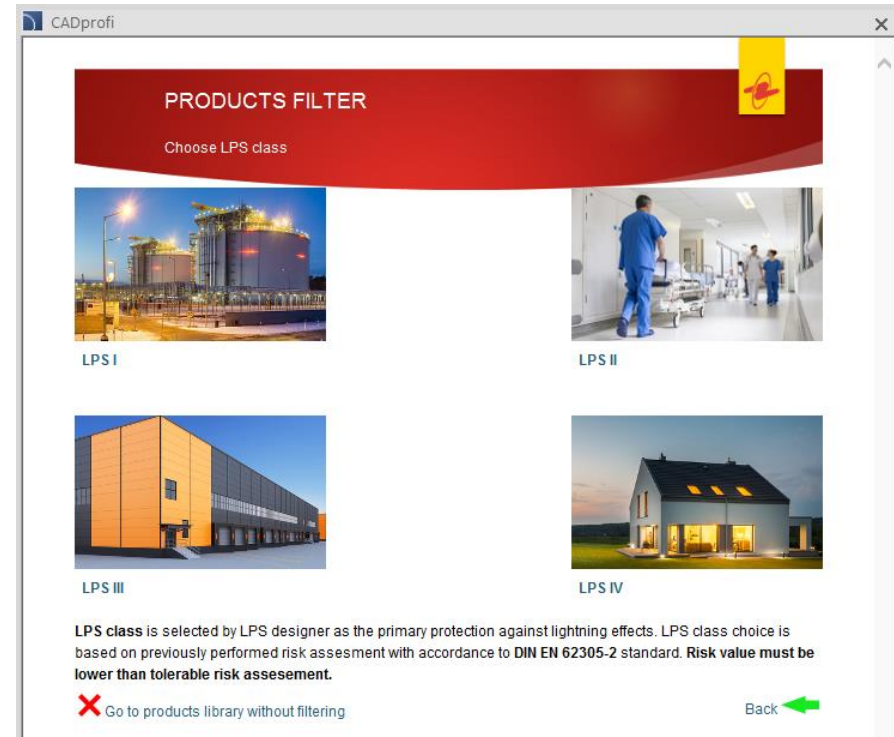
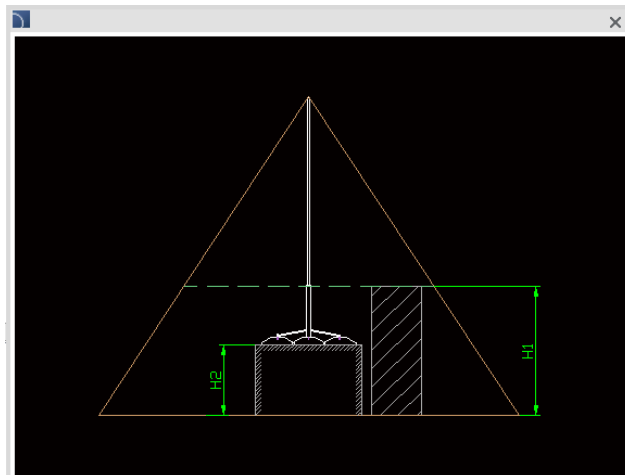
[Watch ABB library movie](#)



✓ ELKO-BIS – updated library for lighting protection design

New features in ELKO-BIS:

- Update of ELKO-BIS company products.
- A new products filtering creator that allows user to easily select the right product, starting from choosing the LPS protection class to the type of roofing and the lighting protection materials.
- Easier selection of accessories, handles etc.
- Parametric definition of object protection zone (protected by masts and needles).
- Dynamic creator of legends.





CADprofi

✓ Update of manufacturers' libraries:





CADprofi

✓ Adjustment to many base CAD programs

CADprofi 2018 has been adjusted to work with latest CAD programs, including: ArCADia PLUS 10.3, AutoCAD 2018, BricsCAD V18, CADian 2017, CMS IntelliCAD 8.3, GstarCAD 2017 SP1, GstarCAD 2018, progeCAD 2018, ZWCAD 2018.

CADprofi 2018 currently works with many base CAD programs including: AutoCAD (since the 2000 version), BricsCAD, GstarCAD, IntelliCAD, progeCAD, ZWCAD, ARES Commander Edition and others.

The AutoCAD logo, with 'AutoCAD' in red and a registered trademark symbol.

The ZWCAD logo, with 'ZWCAD' in blue and a green leaf-like graphic above the 'W'.

The GstarCAD logo, with 'GstarCAD' in blue and yellow, and the tagline 'An Alternative CAD System' below it.

The BricsCAD logo, featuring a blue stylized 'B' and the text 'BRICSCAD' below it.

The progeSOFT logo, featuring a blue globe with a yellow '1' and the text 'progeSOFT' below it.

The IntelliCAD logo, featuring a purple diamond with a yellow 'I' and the text 'IntelliCAD' below it.